



MONGOLIA COUNTRY PRESENTATION



Mr. DASHPUREV TSERENDELEG

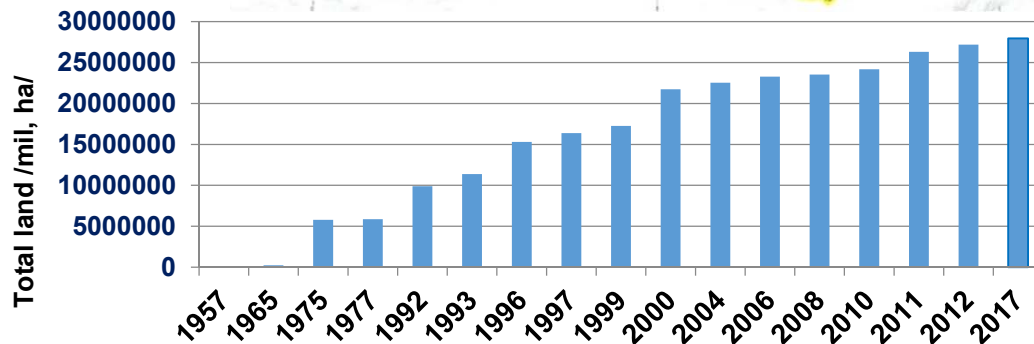
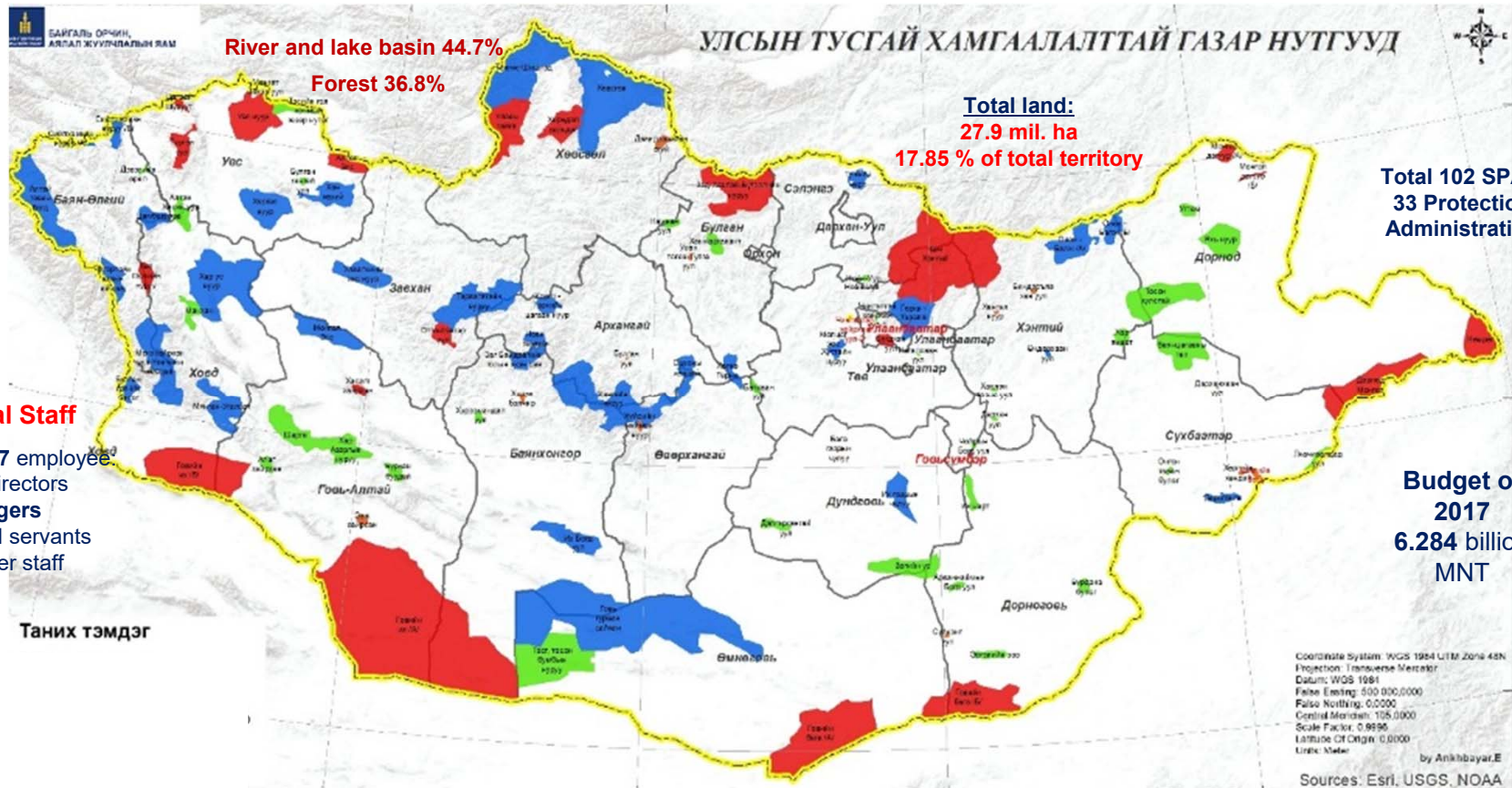
Director of Hustai National Park of Mongolia

ASIA PROTECTED AREAS PARTNERSHIP: 4th TECHNICAL WORKSHOP

June 19-21, 2018

Pyeongchang, Republic of Korea

MONGOLIAN SPA NETWORK





Evaluations on Mongolian SPAs

- ✓ Mongolian SPA's Network
 - Evaluation on threats and problems on Ecology and Biodiversity (Gap analyses)
 - Management capacity evaluation

- ✓ Specific SPA evaluation
 - SPA's management effectiveness evaluation
 - Management plan's implementation evaluation (new)
 - Annual activity plan's implementation

- ✓ Staff evaluation
 - Performance evaluation



Adaptive Management Software for Conservation Projects

METT

(Management Effectiveness
Tracking Tool)

In Mongolia, we are officially using MIRADI program and METT to produce MANAGEMENT PLAN of SPAs since 2016, by order of Minister of Environment and Tourism

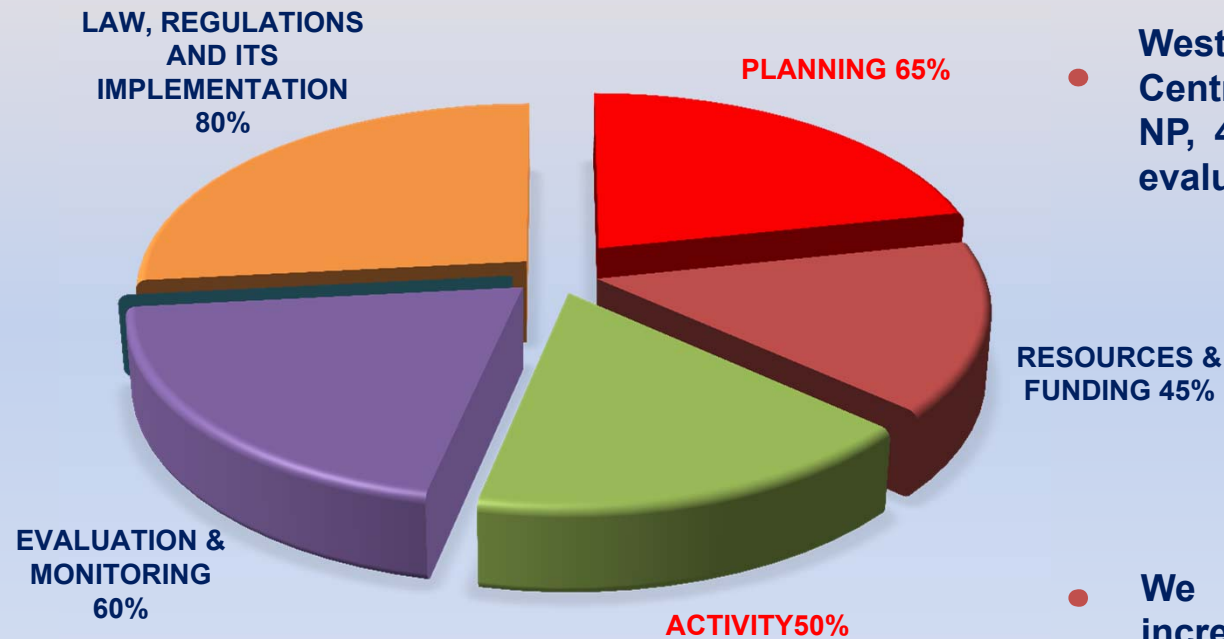


METT

- First methodology was jointly produced by WWF and World Bank in 1998.
- Updated in 2003, 2007.
- METT was used first time in 2005, to evaluate Altai Sayan Region's SPAs.
- Updated in 2012, 2016 for Mongolian SPAs' specialty, needs and demand



- **METT result of Mongolian SPAs in 2016**



- Western, Eastern, Khangai and Central regions' 12 Strictly PA, 19 NP, 4 NR and 2 Monuments were evaluated by METT.

RESOURCES & FUNDING 45%

- We need better Planning and increase Funding to improve SPA's management effectiveness.

Grand Total 66%
It increased by **1,1%** than 2012

| | Name of assessed PAs | Category | Designated dates | Area by Ha | Established year of PAA | Years / METT score by % | | | | | | | Partner and donor organization | |
|----|------------------------------|----------|------------------|------------|-------------------------|-------------------------|---------|------|------|------|------|------|--------------------------------|---------------|
| | | | | | | 2005 | 2009 | 2011 | 2012 | 2013 | 2015 | 2016 | | |
| 1 | Mongol els | NP | 2010 | 271,313 | 2011 | | | | 41.9 | | | 67.8 | WWF | |
| 2 | Khasagt khairkhan | SPA | 1965 | 26,761 | | | | | 40.0 | | | | | WWF |
| 3 | Khukh Serkh | SPA | 1977 | 75,750 | 2002 | | | | 54.5 | | | 56.9 | WWF | |
| 4 | Chigertei river basin | NP | 2012 | | | | | | | | | | 47.9 | WWF |
| 5 | Uvs lake | SPA | 1993/1995 | 747,479 | 1994 | 60.4 | | | 75.5 | | | 73.5 | WWF | |
| 6 | Turgen mountain | SPA | | | | 60.4 | | | 77.3 | | | 75.5 | WWF | |
| 7 | Tsagaan shuvuut | SPA | | | | 60.4 | | | 75.5 | | | 76.2 | WWF | |
| 8 | Tes river | NR | | | | 2006 | 103,704 | 1993 | 60.4 | | | 39.1 | | |
| 9 | Khar Us lake | NP | 1997 | 852,997 | 1997 | 71.9 | | | 60.4 | | | | WWF | |
| 10 | Altan els | SPA | 1993 | | 1994/2012 | 60.4 | | | 67.3 | | | 61.2 | WWF | |
| 11 | Khyargas Lake | NP | 2000 | 341,302 | | 60.4 | | | 68.2 | | | | 62.6 | WWF |
| 12 | Khan khukhii | NP | 2000 | 221,598 | | 60.4 | | | 66.4 | | | | 56.3 | WWF |
| 13 | Bulgankhangai | NR | | | | | | | | | | | 54.5 | WWF |
| 14 | Altai Tavan bogd | NP | 1996 | 656,106 | 1996 | 59.4 | | | 60.9 | | | 63.9 | WWF | |
| 15 | Siilkhem | NP | 2000 | 147,878 | 1996 | 40.6 | | | 60.9 | | | 61.8 | WWF | |
| 16 | Tsambagarav | NP | 2000 | 113,749 | 1996 | 38.5 | | | 60.9 | | | 63.9 | WWF | |
| 17 | Devel | NR | 2000 | 10,619 | 1996 | 15.6 | | | 60.9 | | | 54.2 | WWF | |
| 18 | Munkhkhairkhan-Uench | NP | 2006/2012 | 506,097 | 2006 | | | | 70.1 | | | 70.1 | WWF | |
| 19 | Bulgan river-Ikh Ongog | NP | | 92,744 | | | | | | | | | 53.5 | WWF |
| 20 | Myangan Ugalzat | NP | | | | | | | | | | 68.8 | WWF | |
| 21 | Mungut tsakhir | NM | | | | | | | | | | 53.5 | WWF | |
| 22 | Khan Khentii | ДЦГ | 1992/2012 | 1,748,104 | 1992 | | | | 49.1 | | | 56.7 | WWF/GIZ/KfW | |
| 23 | Otgontenger | ДЦГ | 1992 | 90,499 | 1994 | | | | 70.9 | | | 68.0 | WWF/GIZ/KfW | |
| 24 | Dornod Mongol | ДЦГ | 1992 | 589,906 | 1993 | | | | 43.6 | | | 51.7 | SPAN UNDP/KfW | |
| 25 | Mongol Daguur | ДЦГ | 1992 | 108,154 | 1993 | | | 59.7 | | 47.0 | | 52.4 | WWF/SPAN UNDP/KfW | |
| 26 | Onon Balj | NP | 2000/2012 | 400,467 | 2008 | | | 56.3 | | 64.6 | 65.7 | 62.6 | WWF/KfW | |
| 27 | Ulaagchin khar Lake | NP | 2010 | 259,403 | 2010 | | | | 40.6 | | | | WWF/GIZ | |
| 28 | Tarbagatain nuruu | NP | 2000 | 547,630 | 2007 | | | | 66.8 | | | 61.2 | WWF/GIZ/KfW | |
| 29 | Orkhon vallye | NP | 1996 | 92,718 | 2006 | 37 | | | 53.6 | | | 57.1 | WWF/GIZ/SPAN UNDP | |
| 30 | Khorgo Terkhiin tsagaan Lake | NP | 1965 | 76,893 | 1996 | | | | 59.1 | | | | WWF/GIZ | |
| 31 | Noyon khangai | NP | 1998 | 56,658 | 1998 | | | | 52.7 | | | | WWF/GIZ | |
| 32 | Ikh Bogd | NP | 2008 | 262,856 | 2008 | | | | 50.9 | | | | WWF/GIZ | |
| 33 | Khangain nuruu | NP | 1996 | 906,605 | 1996 | | | | 57.3 | | | 60.5 | WWF/GIZ/KfW | |
| 34 | Gorkhi Terelj | NP | 1995 | 291,839 | 1995 | | | | 52.7 | | | 51.0 | WWF/GIZ/KfW | |
| 35 | Nagalkhaan | NR | 1957 | 1,861 | 1995 | | | | 50.9 | | | | WWF/GIZ | |
| 36 | Ikh Nart | NR | 1996 | 66,592 | 2012 | | 60 | | | | | | SPAN UNDP | |
| 37 | Toson khulstai | NR | 1998 | 458,510 | 1993 | | | | | 56.0 | | 56.1 | TNC/KfW | |
| 38 | Ugtam | NR | 1993 | 46,023 | | | | | | 48.1 | | | 52.3 | SPAN UNDP/KfW |
| 39 | Yakhi Lake | NR | 1998 | 251,218 | | | | | | 46 | | | 52.3 | SPAN UNDP/KfW |
| 40 | Khar Yamaat | NR | 1998 | 50,691 | 2013 | | | | | 46.2 | 53 | | WWF | |
| 41 | Khustai nuruu | NP | 1993/1998 | 48,401 | | | | | | | | 83.3 | KfW | |
| 42 | Zyd Khantai Buteel nuruu | SPA | 2011 | 604,266 | | | | | | | | 64.6 | KfW | |
| 43 | Ulaan taiga | SPA | 2003/2011 | 431,694 | | | | | | | | 40.9 | KfW | |
| 44 | Khiridol saridag | SPA | 1997 | 226,672 | | | | | | | | 42.2 | KfW | |
| 45 | Tengis Shishhed | NP | 2011 | 875,711 | | | | | | | | 42.9 | KfW | |
| 46 | Khuvsugul Lake | NP | 1992/2011 | 1,175,602 | | | | | | | | 59.3 | ADB | |
| | Average score by % | | | | | 52.8 | 60.0 | 58.0 | 58.7 | 51.3 | 59.4 | 59.0 | | |
| | Altai Sayan | | | | | 54.1 | | | 64.1 | | | 61.5 | | |

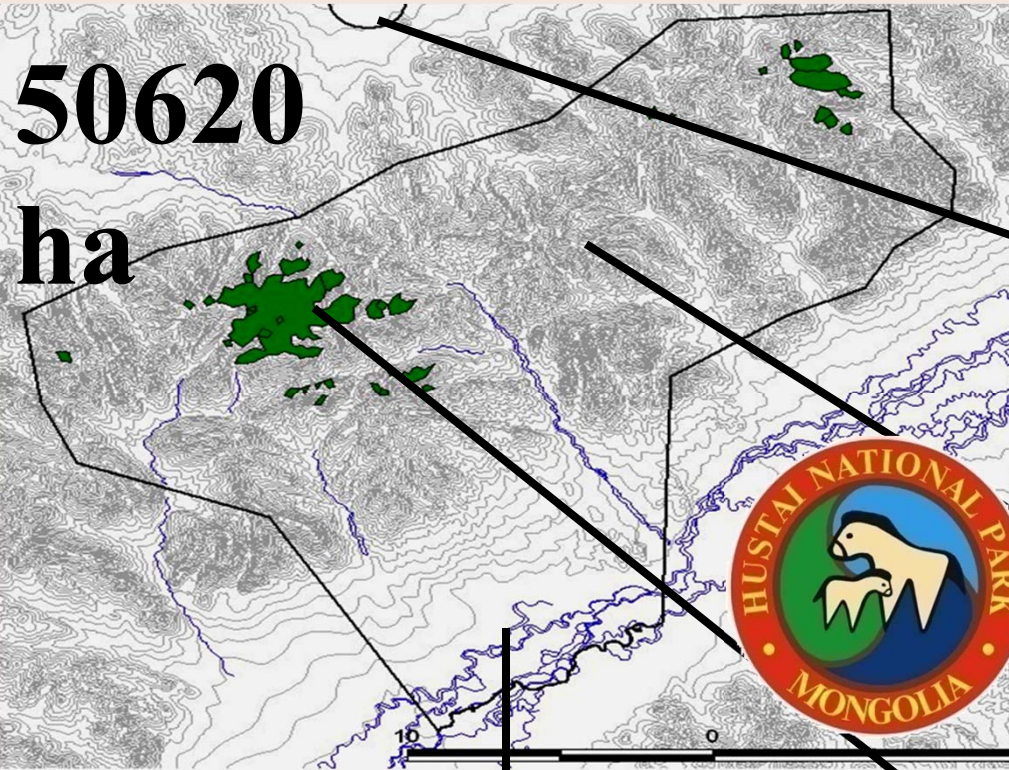
METT benefits and challenges

- ✓ Define current situation
- ✓ Knew result of implemented activities
- ✓ Define priorities of next planning
- ✓ All stakeholders involvement
- ✓ Define criteria to evaluate



- ✓ It is not easy to evaluate SPA Management Plan's implementation through METT.
- ✓ WWF is working on this challenge and soon introduce new methodology.

HUSTAI NATIONAL PARK



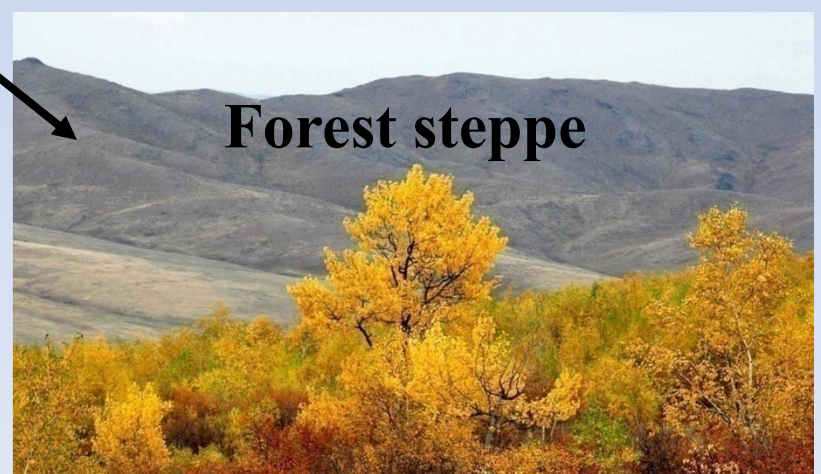
**50620
ha**



Sand dunes



Mountain steppe



Forest steppe



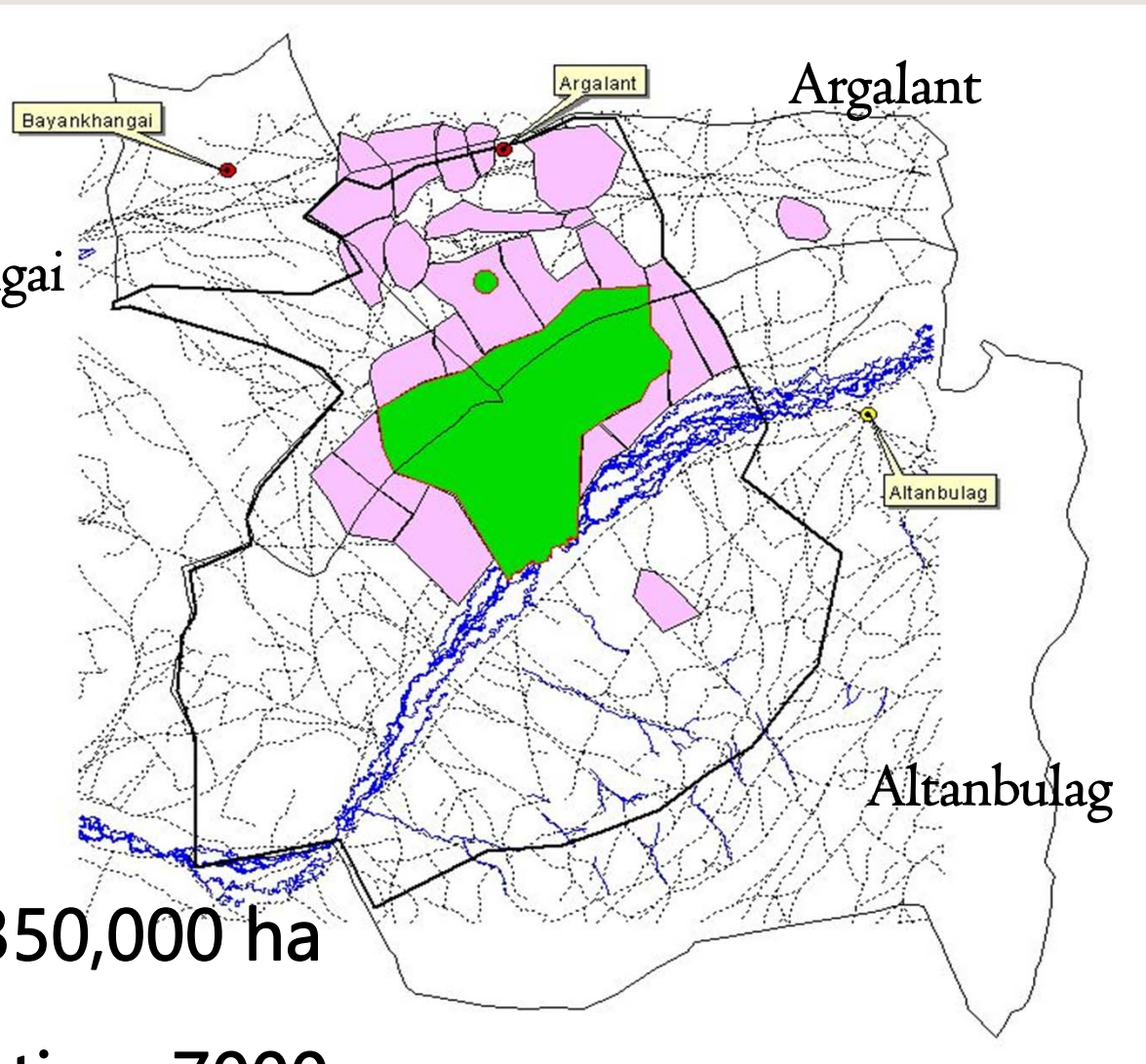
River and its valley



Hustai NP and its Bufferzone



Bayankhangai



Area: 350,000 ha

Population: 7000

Takhi-*Equus przewalskii*



- Only living wild horse species
- Extinct in wild around late 1960
- Reintroduction project started in 1991
- First 15 horses brought in HNP in 1992
- Total 84 horses, 5 transport, 1992-2000

34 harems, 312 Przewalski horses
roaming freely in HNP







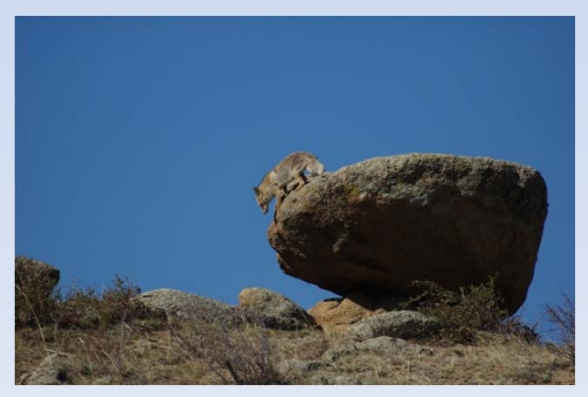
☉ Vegetation



- ☉ 450 vascular plants (food-17, medical-217, honey/meliferiuos 236, poisonous-43)
- ☉ 85 species of lichens
- ☉ 90 species of moss
- ☉ 33 species mushrooms (fungi)
- ☉ Birch forest covers 1850 ha and it is south-west part of the Khentii mountain forest taiga.

🌐 Wildlife

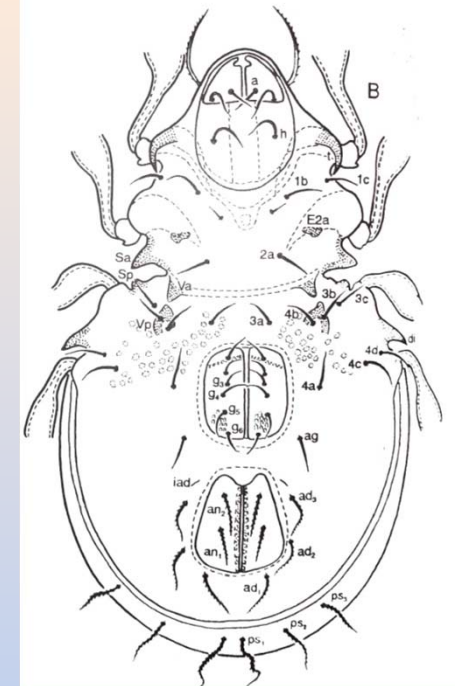
55 species of mammal





223 species of birds





Over 1000 species of insects

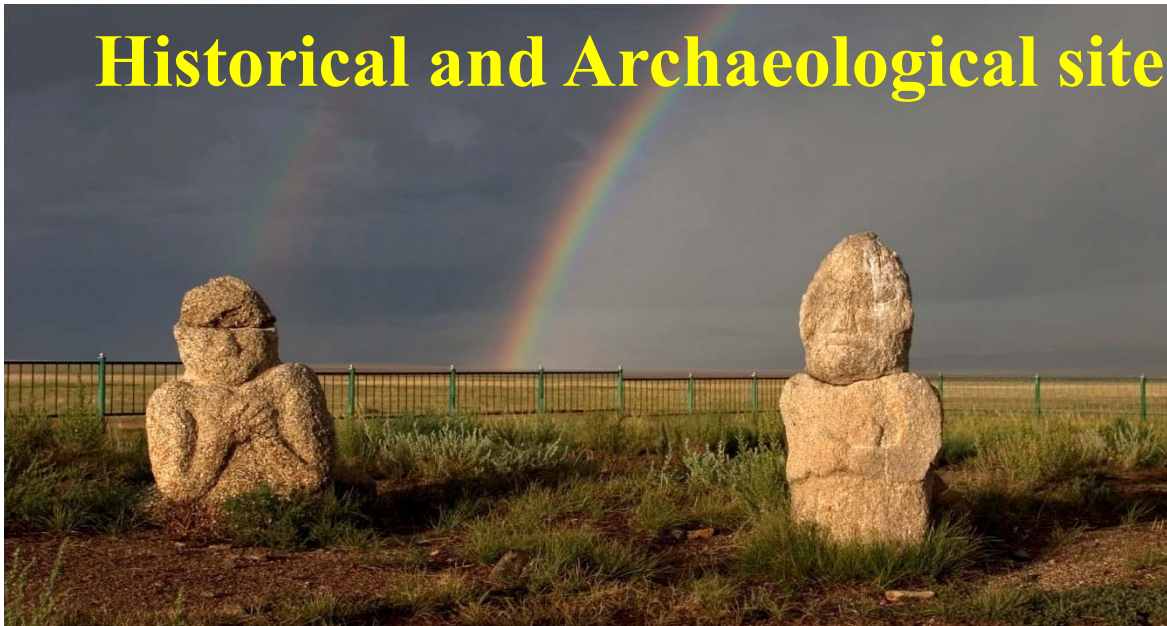
Epidamaeus khustaiensis



2 species of amphibian, 2 species of reptile

16 species of fish

Historical and Archaeological sites of HNP



“Ungot” grave site

belongs to V-VII century AD



**Deer Stone
(II-I century BC)**



**Hunnu grave
(II-I century BC)**

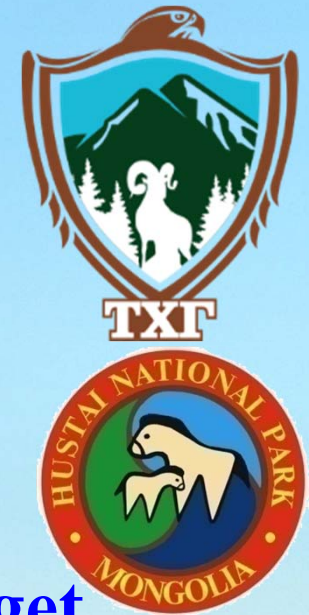


**Turkic grave
(V-VII century AD)**

HNP is the only National Park which is managed by NGO in Mongolia.

- **1992-2003 - MACNE**
- **Since 2003 - “Hustai National Park” Trust**

No financial support from the state budget



HNP was registered in Man and the Biosphere Programme, UNESCO in 2002



“Hustai National Park” Trust became a member of IUCN in 2007



MAIN ACTIVITIES

- Conservation of the ecosystem of HNP and its historical and archaeological sites
- Reintroduction of Przewalski's horse, Takhi
- Research and Training
- Development of Ecotourism
- Development of Buffer zone

5 units, 53 staff





The results of the protection:

- ❖ Overgrazing was solved
- ❖ Increase of wildlife (marmot, red deer)
- ❖ Immigration of new species (Mongolian gazelle, wild sheep)

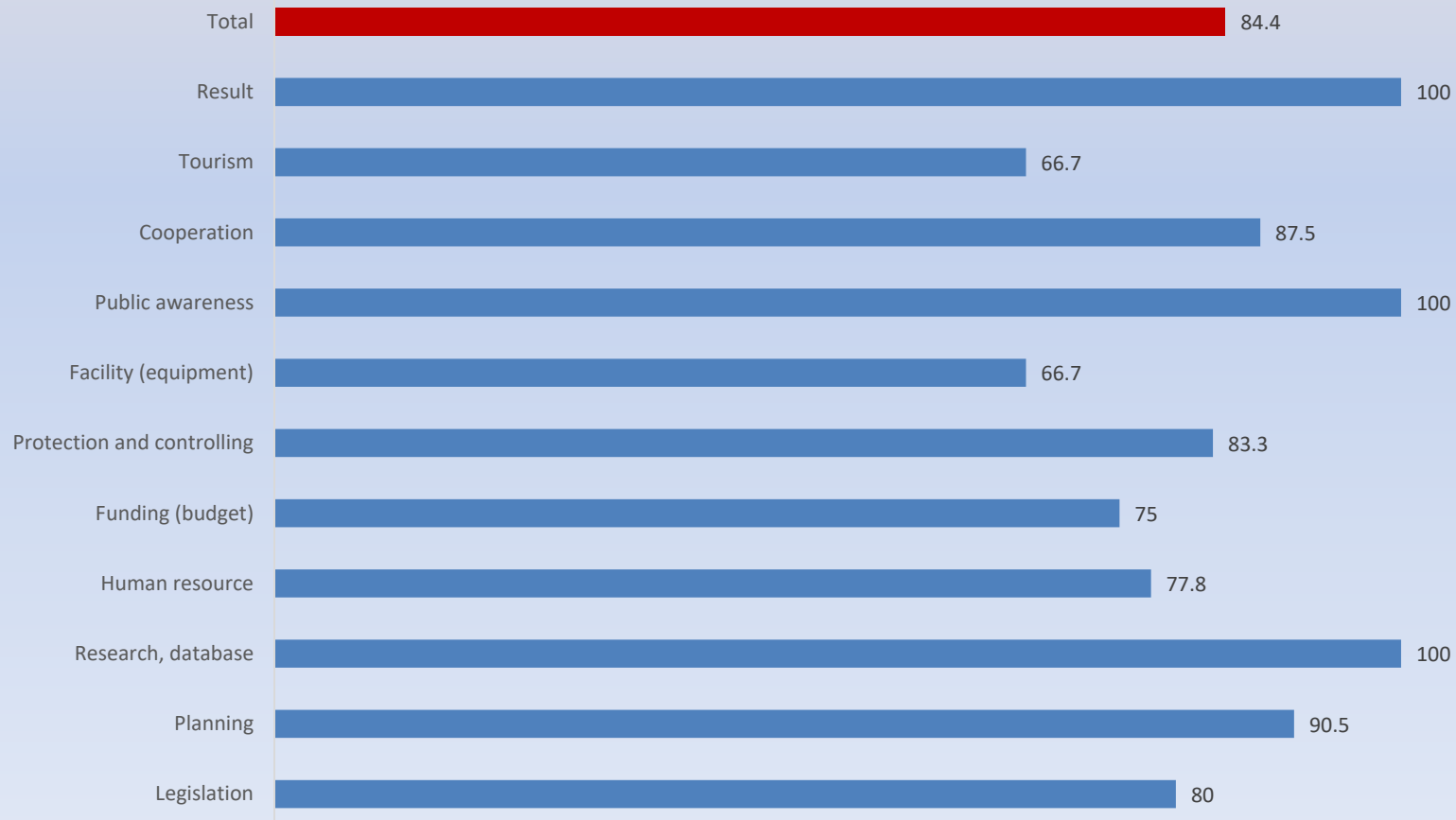


Why HNP used MIRADI and METT

- HNP's last management plan was implemented during 2011-2015
- We intended use MIRADI and METT to produce our current MP.
- HNP's management effectiveness was evaluated by HNP staff and Bufferzone people and local administrations.

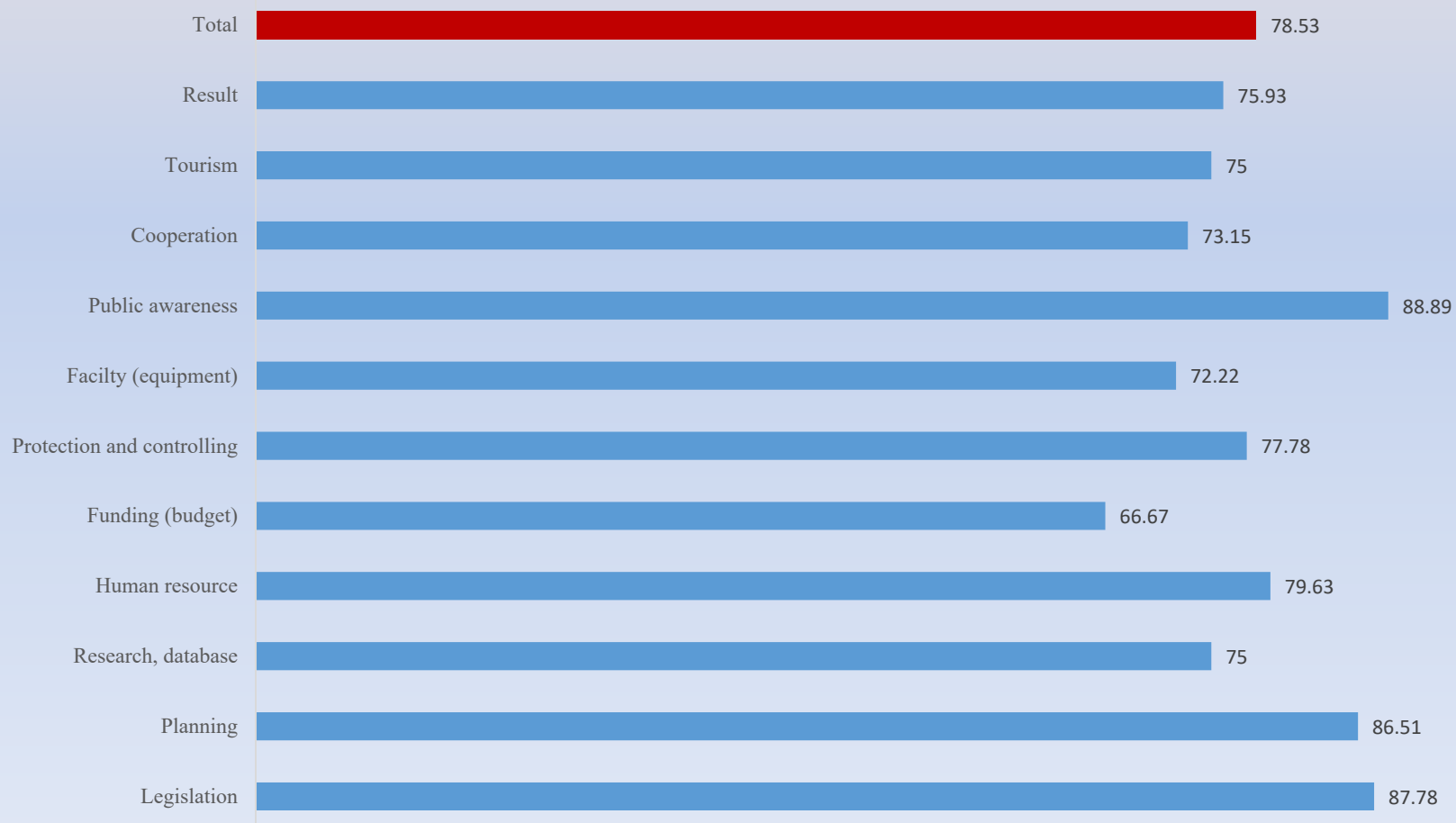


METT result of HNP, 2016. Evaluated by Bufferzone people and local administrations . (by percent)





METT result of HNP in 2016. Evaluated by HNP staff (by percent)



Main findings through METT

- To secure sustainable financial resources
- To develop tourism according to HNP's capacity
- To ensure carrying capacity of HNP and its BZ
- To improve facility and staff capacity
- To prevent soil erosion because of offroad driving
- To increase public awareness

We learnt through METT...

- We knew exactly what are our priorities and plan proper MP.
- Plan activities to improve MP implementation.

Result

- Income is increasing every year.
- Protection and controlling activity is improved.
- Organizing more activities for BZ people.

And

- We planned to conduct METT in every 2 years.
- We planned to evaluate MP implementation.



Green List
Protected | Conserved Areas

- At the moment no SPA has included in IUCN Green List
- Knowledge about IUCN is not strong among SPA staff
- We need to improve or knowledge about IUCN's importance

Other International Standards



Spatial Monitoring and Reporting Tool

- SMART tool has been piloted in Small Gobi SPA for the last 2 years by WCS.
- SMART official working group established headed by the Minister in 2017.
- Ministerial order issued to scale up SMART to all other protected areas in 2017. And this work is in the ministry work plan.

We are reintroducing Przewalski's horse in 3 sites (2 SPA and 1 locally protected area) through standards of IUCN/SSC Equid Specialist Group.

We have strong interest to learn and adopt other proven International PA Management standards.

Thank you very much for your attention!

